



## SELF-GUIDED TOUR

### Welcome to the Eastern New Mexico University Self-Guided Tour!

We invite you to take a look at our extensive overview of the inner workings of ENMU and all that we stand for. Through this venture, you will learn why Eastern is an opportunity that will give you the tools to be successful in the classroom and in your future endeavors. We will tour our history, success, state of the art facilities, campus life and much more.

We care about your success, and for us, you're more than just a number. We believe every person matters and has the potential to be more than they were yesterday. Let us show you how we can help you; we think you're worth it!

To set up your personalized tour, go to [enmu.edu/Visit](http://enmu.edu/Visit).



**ENMU**  
GREYHOUNDS

## SELF-GUIDED TOUR

At Eastern New Mexico University, you will be challenged, encouraged to think critically and communicate persuasively as you progress toward your potential goals. You can explore what inspires you – in and out of the classroom – and set a path of study that fits your interests. A variety of services are available to help you succeed in your academic, personal and professional life.

Our tradition of the personal touch, accredited academic programs and affordable cost makes you feel at home while at Eastern, whether you are taking classes on campus or online.

You have big plans and dreams ... College is the perfect place to start. At ENMU, you can choose from over 90 degree options, 1,200 courses and even online programs to fit your busy schedule. You will be prepared for professional and personal success, learning from faculty in an environment designed to help you succeed in an ever-changing world.

As part of our tradition of providing a quality education, our degree programs continue to be nationally accredited by the Higher Learning Commission and we are a lifetime member of the North Central Association of Colleges and Schools.

ENMU has earned program accreditations from the following agencies:

- National Association of Schools of Music (NASM)
- Accreditation Council for Business Schools and Programs (ACBSP)
- American Speech-Language-Hearing Association (ASHA)
- Accreditation Commission for Education in Nursing (ACEN) (formerly National League for Nursing)
- Council for the Accreditation of Educator Preparation (CAEP)
- Council on Social Work Education (CSWE)

ENMU is on the approved list for the American Chemical Society, offering an ACS-certified degree.

### Eastern New Mexico University

Established 1934

### University Slogan

Student Success—that's what it's all about!

### School Colors

Green and Silver

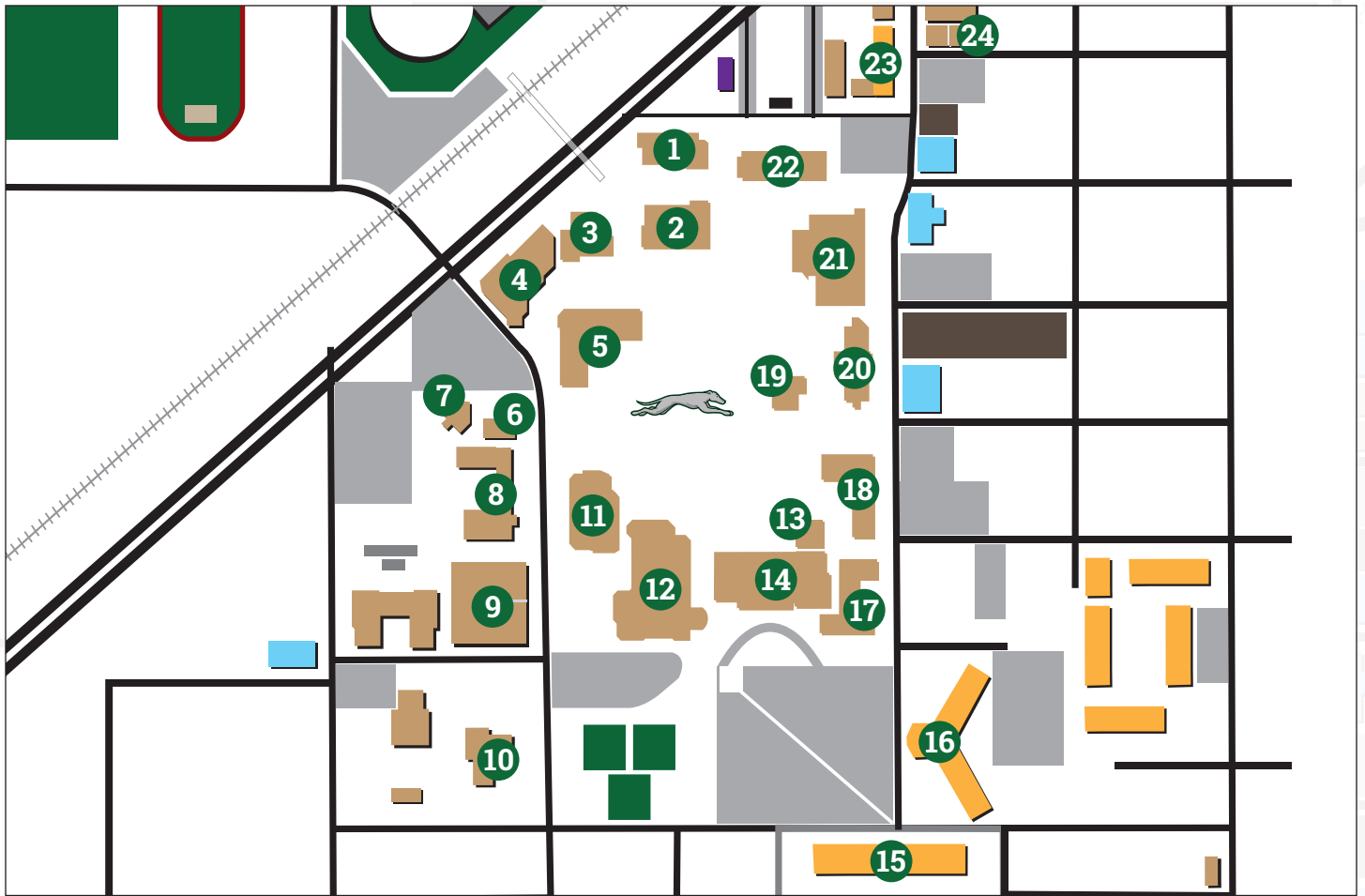
### Mascot

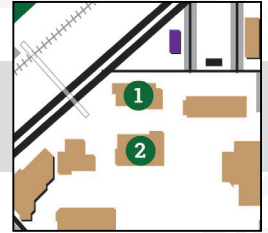
Greyhound – Ralph and Roxy

### Fight Song

O Hail ENMU to You  
May we ever be loyal and true.  
Loudly our praises we sing  
Through the ages, may they ring.  
And all through our lives we'll recall  
the school that we love best of all.  
Hail E-N-M-U to you  
The Green and Silver, Green and Silver  
reign forever.







## 1 Student Academic Services (SAS)

In the 1950s, Student Academic Services was created to be a multipurpose facility for prospective and current students. It was built around a patio that is now a lounging area under a glass ceiling. This building houses a large array of useful offices for our students, including:

- **Financial Aid:** Covers the FAFSA, student loans and grants; they can help you with ways to pay for college.
- **Enrollment Services:** Helps you with general admission, applications, transcripts, scholarship applications and test scores. If you have questions about the University or your application and status, this is where you can get them answered.
- **Advising Center:** Helps with advising for freshmen and other students who have not decided a major.
- **Accessibility Resources and Testing:** Provides adjustments to create an equal academic opportunity for students with disabilities; they also offer CLEP and residual testing.
- **Counseling and Career Services:** Provides job search and resume help and professional, personal counseling for students throughout the year.
- **Vice President for Student Affairs:** Dr. Jeff Long

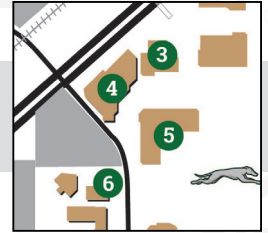


## 2 Music Building (MB)

The Music Building houses the administrative offices for both the College of Fine Arts and the Department of Music. The original Music Building used to contain six practice rooms and one studio. With the recent \$12 million renovation, the building now has a band hall, choral rehearsal room, 250-seat performance hall, teaching studios, faculty offices, outdoor concert stage and green, four classrooms (three are smart classrooms), Midi Lab, 18 practice rooms, lounge, and a large piano inventory.

The Floren Thompson, Jr. Band Hall is the largest smart classroom on our campus; the superior ceiling and wall treatments with fully retractable curtains give the hall excellent acoustics. The Midi Lab is outfitted with new Macintosh computers, keyboards and other hardware. The Midi Lab is regularly updated to ensure access to the latest editions of popular software. All practice rooms contain pianos (grand/upright/Yamaha Clavinoca), a music stand, seating, and an adjustable upright mirror for personal observation during practice. Music students, faculty and staff can gain entrance to the facility via card-swipe locks when the Music Building is closed to the public. For music majors or students interested in music the department offers:

- Private lessons
- Scholarships
- Three choirs – University Singers, Chamber Singers and Swanee Singers
- Two concert bands – Wind Symphony and Symphonic Band
- Three ensembles – Greyhound Sound Marching Band, Jazz Band and Steel Drum Band
- Bands, choirs and ensembles travel, including overseas trips

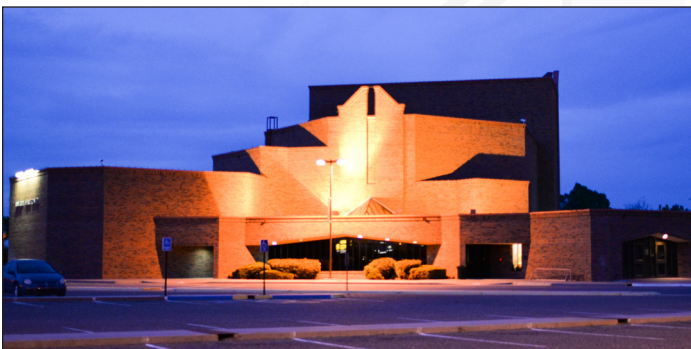


### 3 University Computer Center (UCC)

This building began as the first theater on ENMU's campus. Before that, the building was located at the Ft. Sumner military base and moved to campus in one piece. After the construction of the new theater, the old theater was renovated into this state-of-the-art University Computer Center. This building contains three computer labs that house scanners and printers. Two of the labs are designed for use as classrooms. The UCC's student labs are open until midnight for ENMU students.

### 5 Jack Williamson Liberal Arts (JWLA)

This building is named after a local science fiction writer, Jack Williamson. After the renovation in 2014, the building is one of the most modern on campus. It houses the criminal justice, history, humanities, philosophy, mathematics, and language and literature programs as well as a computer lab and language lab. Students are welcome and encouraged to use our Writing Center to receive help with each stage of writing a paper.

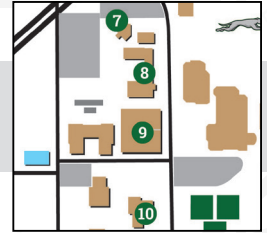


### 4 University Theatre Center (UTC)

The theater puts on about eight productions per year and is the primary setting for dance, theatre and large musical performances. The building houses a 419-seat proscenium theater, a 125-seat experimental black-box theater, classrooms, dance rehearsals, dressing rooms, a scene shop and a costume shop. Students do not have to be majoring in theatre to audition and participate in productions. We also offer a new works program, which gives students the opportunity to have their plays produced.

### 6 Family and Consumer Sciences Building (FCS)

This building houses classrooms as well as laboratories for students to practice and study cooking techniques. The culinary arts program coordinates with the education program to offer early childhood education majors the opportunity to learn about nutrition necessities for early childhood development. They also prepare lunch for the Child Development Center daycare located on campus. We are the only university in New Mexico to offer a 4-year degree in culinary arts.



## 7 Child Development Center (CDC)

There are a maximum of 50 children enrolled in the CDC program per semester. This facility is equipped with a special booth with one-way glass for observation purposes. Home economics, education and psychology are some examples of classes that utilize the facility for observations. This allows for excellent hands-on learning environment for students going into early childhood careers.



## 8 Art and Anthropology Building (AA)

The Art and Anthropology Building was renovated and re-purposed from the former Technology Building in 2012. The renovations included; new labs for both art and anthropology classes, Mac labs, faculty offices, student lounges, ceramics lab, curation lab, forensic anthropology lab, Geo-Archaeology lab, and a fully equipped arts lab.



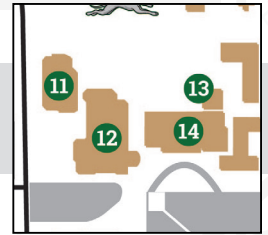
## 9 Communication Building (COM)

This building houses the Broadcast Center and Department of Communication faculty offices and classrooms. KENW-TV 3 first went on air September 1974. Today there is over \$5 million worth of equipment that is utilized by the students. Our station is a PBS affiliate and is one of the few stations in the U.S. where students work on programs that are aired on national and international PBS. The right side of the building contains the academic facilities and the left side of the building contains the KENW-TV station and digital broadcasting. The KENW-TV station allows students to get hands-on experience as early as their freshman year.



## 10 Agriculture Building (AG)

Within this building, you will find an indoor live animal center and three laboratories that allow our students to gain enhanced learning through research. The ENMU Animal Reproduction and Nutrition Research Laboratory is approximately 605 square feet and designed for cell cultures, hormone assays, histology, RT-PCR and other needs. The Cell Culture Laboratory is designed for cell cultures, hormone assays, histology, RT-PCR, and other needs. The Teaching Laboratory has the ability to do complete feed analysis, embryonic transfer, semen analysis and other processes. The indoor Live Animal Center can house bovine, ovine or porcine. It consists of eight stock pens and a feed storage area. The Live Animal Center includes an animal surgery room and a secure pharmaceutical/anesthetic storage room.



## 11 Education Building (ED)

Before this was the location for the Education Building, this was the place where ENMU students and fans watched the very first on-campus football games at the original Greyhound Stadium. This building was constructed in 1969 and remodeled in 1994. The Education Building houses the College of Education and Technology education programs, Teacher Education Office and contains several smart classrooms. A favorite stop for students, faculty and staff in this building is the Brewed Awakening coffee shop which hosts a myriad of coffees, freshly baked pastries and other snacks.



## 12 College of Business (COB)

This building houses the College of Business, Department of Psychology and Duplicating Services. There are two courtyards built into the building that students use to study and hangout. There is also the Becky Sharp Auditorium, a 250-seat theatre, with an 18-foot rear projection screen for media programs. Within this building is where you can find the faculty offices for business, political science, psychology, sociology and criminal justice. Some of the building amenities include:

- Computer lab with a printing station
- Becky Sharp Auditorium
- Smart classrooms



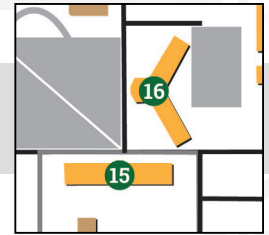
## 13 Bookstore (BKST)

The ENMU Campus Bookstore is managed by Barnes and Noble and is partnered with ENMU to provide you with a variety of goods and services at competitive prices. You can buy your books, find cool ENMU apparel and get many class supplies among other things in the bookstore.



## 14 Campus Union (CUB)

This building is considered the heart of student life, containing the Housing and Residence Life, Dining Services, student government, Associated Student Activities Board, and Campus Life. This is where you can find a great variety of entertainment: concerts, comedians, theatrical engagements, dances, lectures, and many other student events. Our cafeteria is located in this building along with a café and WOW, which is another food establishment.



## Residence Halls

We want you to get a good start on your college career; in our residence halls, you will find a safe environment that gives you privacy and quiet time. You will also find comfortable hangout areas to listen to music, play games or whatever it is you like to do to relax and have fun. With our dorms on campus, you are able to walk to your classes. Since a meal plan is required when you live on campus, you don't have to worry about cooking or doing dishes.

Each of Eastern's residence halls have the following:

- 24-hour reception/security/service desk
- Secure proxy system allows residents electronic card access to the front door with more specific access for hallways and elevators
- 24-hour computer labs
- In-room expanded cable (premium channels extra)
- In-room T1 Ethernet connection and service
- In-room sinks
- In-hall laundry facilities
- Professionally trained resident assistant staff
- Air conditioned/controlled heat
- Refrigerator rentals
- Study lounges
- Vending machines

## 15 Guadalupe Hall (GH)

This residence hall is Eastern's newest and largest addition to Greyhound residential options. Guadalupe Hall houses 307 students and offers suites with semi-private bathrooms and in-room sinks.



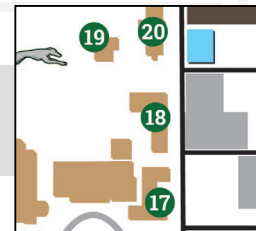
## 16 Eddy Hall (EH)

This residence hall is a three-story building with six active wings, housing 305 students in both double and suite style rooms. Eddy Hall has a full kitchen for Greyhounds to utilize; with utensil rentals available from the hall's front desk.

Be sure to check out our other residence hall, Curry Hall. (23 on this self-guided tour)







## 17 Lea Hall (LH)

This building contains classrooms and offices for the communicative disorders (CDIS), social work and nursing programs. We have a Speech and Hearing Rehabilitation Center (SHROC) located in this building that offers an educational environment where CDIS majors gain hands-on experience. Lea Hall is also where you will find our full service Post Office and Blackwater Draw museum.



## 18 Roosevelt Science Center (RSC)

This building is the center for science research and geology instruction on the ENMU campus. The building also houses the Gennaro Natural History Museum that contains animals that are indigenous to the Llano Estacado – including: rattlesnakes, turtles, kangaroo rats and fish. Roosevelt Science Center also contains the Miles Mineral Museum, a gem, rock and mineral collection donated to ENMU by the Miles family from Roswell. This building is where you will find science faculty offices, geology classes and laboratories.



## 19 Natatorium (NAT)

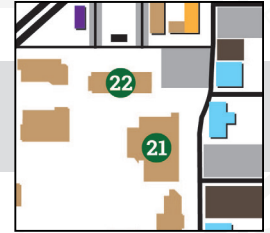
Our indoor pool is used for recreational and intramural swimming. Open and lap swim hours are available along with fitness classes. Our natatorium is staffed with certified lifeguards.



## 20 Science (S)

When this building was first constructed, it had three classrooms; one with the capacity of 100 students and the other two had a capacity of 50 students. The renovated building now has one of the largest classrooms on campus with 125 seats and two 50 student capacity classrooms. There are two smart classrooms, additional regular classrooms, seminar rooms and autoclave equipment. During the renovation, we also added onto the building to create a 10,000 square foot laboratory.

Our science departments stand out in a magnitude of ways. Undergraduate students have the opportunity to publish and do research, which isn't common at other universities. We are one of only a few non-medical universities to have a cadaver on campus for biology students, so you can get a hands-on experience. If you are interested in obtaining both your bachelor's and master's in biology we have a fast track program that can get you both degrees in five years.



## 21 Golden Student Success Center (GSSC)

The Golden Library has been a center of research and learning on the ENMU campus for years. Thanks to New Mexico voter support of G.O. Bond C in the 2016 November election, ENMU will be completing renovation in spring 2018 to turn the Golden Library into the Golden Student Success Center.

While retaining all the functions of a traditional library, the GSSC will be a destination for social and intellectual interaction between students, faculty and resources, and become a hub on campus where students can connect with needed resources in a technology-rich environment.

The GSSC will also include a two-story-tall art gallery, presentation rooms fully equipped and flexible accommodating various shapes and sizes, an electronic events display and a triage/assessment area where students can meet with staff who will refer them to the appropriate people for help.

The GSSC will give ENMU students access to state-of-the-art technology and resources and will provide:

- Traditional library holdings for on-campus and online students
- Commons area for students to gather
- On-site café
- State-of-the-art technology
- Collaborative, customizable study spaces
- Upgraded Wi-Fi hotspots
- After hours help with registration, financial aid, advising, counseling
- And more!

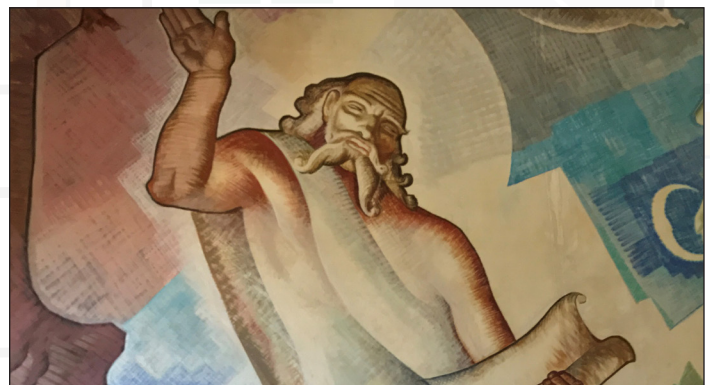
Golden Library has been temporarily moved into Bernalillo Hall while renovation of the infrastructure of the GSSC is underway.

## 22 Administration Building (ADM)

This is the first building to be utilized by our institution when we opened our doors in 1934 as Eastern New Mexico Junior College. Students used to attend classes in the building and in a small farmhouse. There are two murals located in the Administration Building, both were funded by the Works Project Administration in the late 1930s and early 1940s. The largest is a representation of Chapter 12 of Ecclesiastes in the Bible, begun and completed in 1937 by Lloyd Moylan of Albuquerque. The smaller of the two depicts the development of Portales through the completion of the painting in 1941.

Within the Administration Building you will find:

- **Cashier:** This is the location you'll pick up your paychecks and pay your University bill, Lobby
- **Student Accounts:** This office will be able to assist you with any questions regarding your bill or to set up a payment plan, Room 114
- **Information Desk:** If you have any questions about our University, this is a great starting place, Lobby
- **Registrar:** In this office, you can request your official transcripts and find out more about our veterans services and military assistance, Room 105
- **Our President's Office:** Dr. J.S. Elwell, Room 102





## 23 Curry Hall (CH)

Curry Hall is a two-story building that offers double style rooms and each have a sink, two closets and two desks. Curry has a full kitchen for students to utilize, so if you live in this residence hall, you can rent kitchen utensils from the front desk but are responsible for cleaning up.



## 24 ENMU Police Department (UP)

The campus police force is located across the street from Curry Hall. The ENMU Police Department (ENMUPD) provides 24-hour security surveillance of the campus as well as law enforcement services. You can even call for a police escort if you take night courses and feel uncomfortable walking to your car or residence hall.

You'll need to go to the ENMUPD to get a parking sticker for your vehicle, which is required if you are planning to park on campus for any reason. When you register for a parking sticker, you'll need to bring your license and vehicle registration along with the form (found at [enmu.edu/Parking](http://enmu.edu/Parking)).

If you have any questions or would like to register for a tour, please visit [enmu.edu/Visit](http://enmu.edu/Visit) or call us at 800.FOR.ENMU (800.367.3668).

